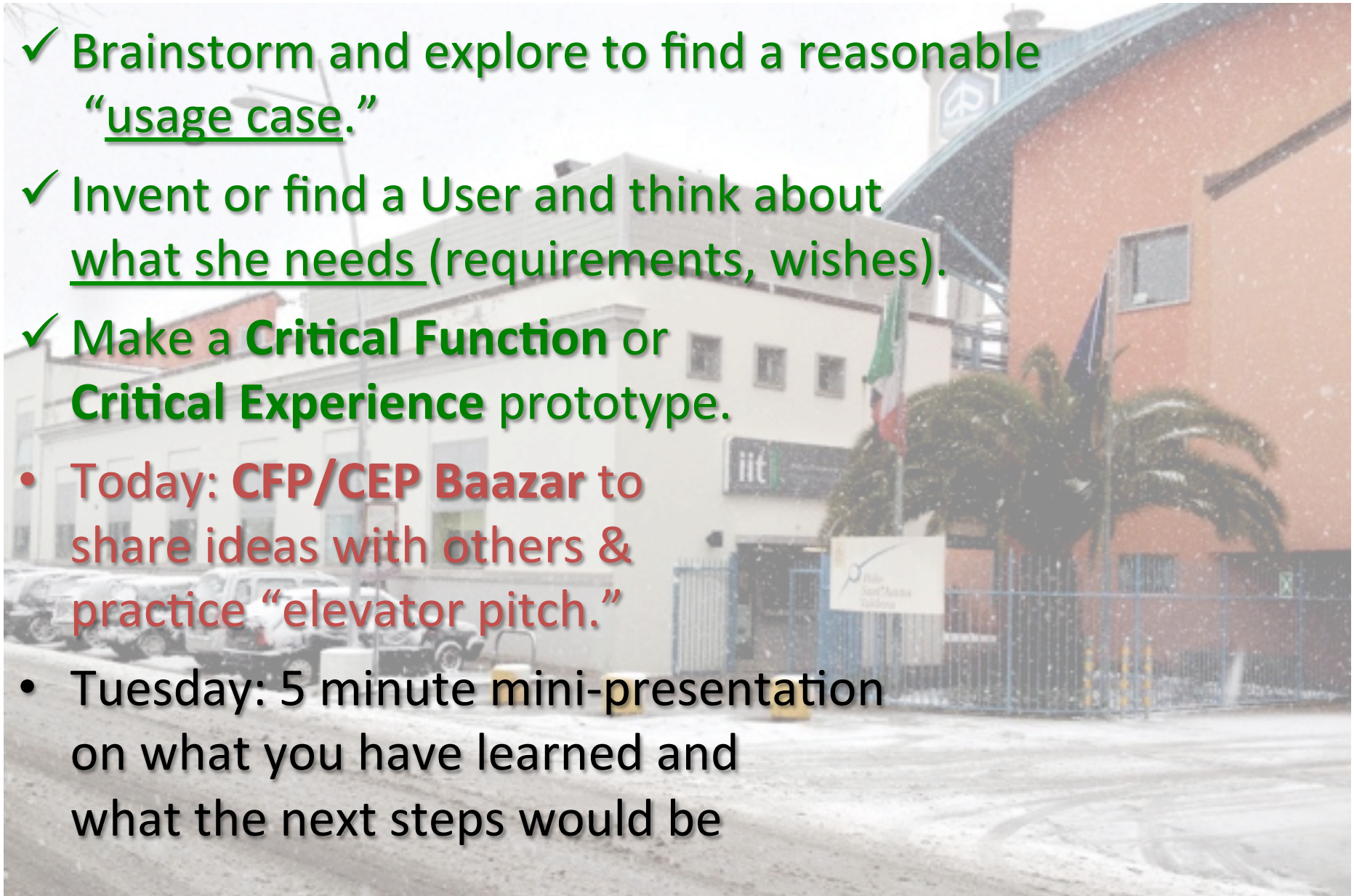


Where we are in the process:

- ✓ Brainstorm and explore to find a reasonable “usage case.”
- ✓ Invent or find a User and think about what she needs (requirements, wishes).
- ✓ Make a **Critical Function** or **Critical Experience** prototype.
 - Today: **CFP/CEP Bazaar** to share ideas with others & practice “elevator pitch.”
 - Tuesday: 5 minute mini-presentation on what you have learned and what the next steps would be



Some News...

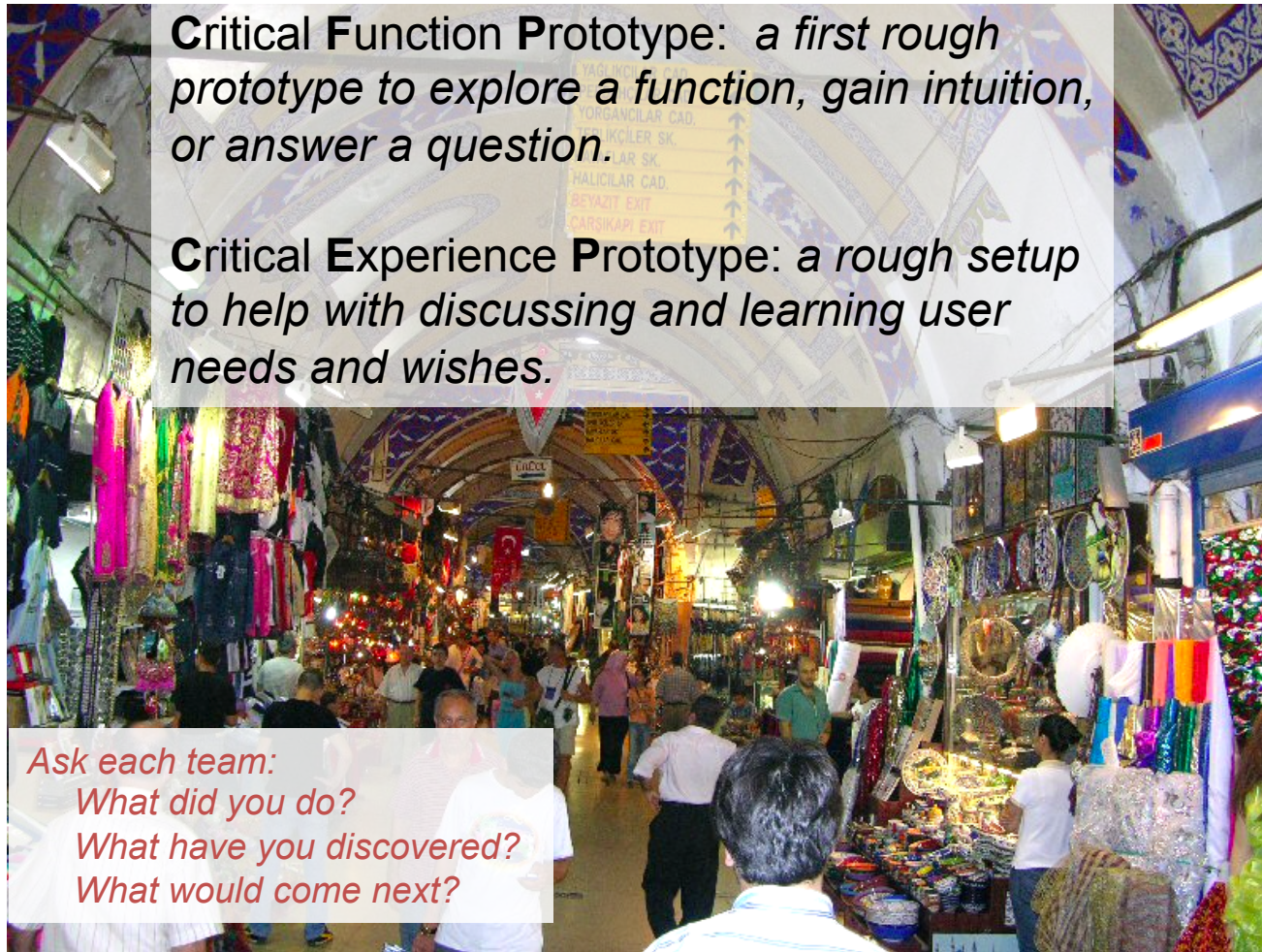
- Have you got an “[elevator pitch](#)” ?
- In fact, there really is a Silicon Valley venture capitalist or “angel” group that may be interested in your ideas!
 - (email dialog with srush@rushlawgroup.com)

CFP/CEP Bazaar

Group1: Selectively adhesive wall covering

Group2: Selective adhesion or friction for soft robotics

Group3: Adhesive conveyors and material handling



Critical Function Prototype: *a first rough prototype to explore a function, gain intuition, or answer a question.*

Critical Experience Prototype: *a rough setup to help with discussing and learning user needs and wishes.*

*Ask each team:
What did you do?
What have you discovered?
What would come next?*

Group4: Gecko or microspine camera + flash mounting

Group5: SEM fixturing

Group6: Nonejecting compliant grippers

Group9: Gentle, easily attached/detached bandage

Group8: Selectively lockable endoscope

Group7: Small, low-power brake or clutch